





























The MAN chassis:

MAN TGM 13.290 4x4 BL 4x4

Wheel base 4250 mm

extended drivers cab with bench and belts for 4 additional passengers.

MAN 6-cylinder inline turbodiesel with intercooler

Displacement 420 cubic in. (6.871 ccm)

Performance 213 kW/290 hp Euro 5

ZF 12-speed semi-automatic gearbox

2 speed transfer case with street and cross country ratios

all wheel drive with center differential lock

Differential locks for front and rear axle

Disc brakes.

Anti lock brake system

Leaf springs front and air suspension rear

Tires 365/80 R 20 Michelin XZL, tubeless (385/65 R 22,5 or 395/85 R 20 on request)

2 fuel tank, capacity 105 U.S. gallons (400 liters) each.

Fuel prefilter with water separator

seats with air suspension, heatable

Aircondition

Additional safety locks for drivers cab

Additional WEBASTO heater

<p>Torsionfree subframe, double 3 points for 4x4</p> <p>torsionsfree subframe between chassis-frame and ACTION MOBIL-body.</p> <p>Hot galvanized. Especially constructed for big and heavy bodies. Incl. Stabilizers for a smooth running without waving also at high speed.</p>	1
<p>Cutting of chassis frame overhang.</p> <p>Cutting of chassis frame overhang. Dis- and assembly of chassis tail crossmember. Cutting of frame rails. Relocation of electrical wiring.</p>	1
<p>Side reflector lights</p> <p>Delivery, assembly and electrical connection of side reflector lights required under the EU statutes.</p>	1
<p>Original MAN fuel tank</p> <p>Original MAN fuel tank capacity 400 litres, mounted on 2 brackets.</p> <p>Fuel transfer switch and fuel gauge mounted in dashboard.</p> <p>Filler cab lockable.</p>	1
<p>Fuel Tank system 680 Litres</p> <p>Provide and fit customized aluminium fuel tanks (250 litres left and 425 litres right) together with all indication and changeover equipment. All mountings and mechanical elements robust and built to off-road standard.</p>	2
<p>Air tanks, starter batteries, fuel filters</p> <p>Removal, relocation and remounting of compressed air tanks, starter batteries and fuel filters to optimize space for additional exterior lockers.</p>	1
<p>Body ACTION MOBIL, size: 5300 x 2350 x 2089 mm</p> <p>exterior dimensions: 5.300 x 2.350mm. Interior height: 1.950 mm Walls and roof panels fiberglass panels, skin polyester reinforced. Panel sandwich 61mm, inside skin 2mm, outside skin 3mm, additionally reinforced. 55mm insulation foam, density 50kg/m3. K:0,37/m3/h/°C. Floor plate 105 mm, reinforced with square section steel tubes.</p>	1
<p>ACTION MOBIL entrance in two parts, with integrate steps. Surcharge.</p> <p>ACTION MOBIL entrance in two parts with additional, upward-opening flap.</p> <p>With integrated steps out of GF-sandwich panels.</p> <p>PVC double lip seal. Double GF section. 3-point locking by means of solid lever bolt.</p> <p>Top quality security cylinder lock with integrated dust protection in one key system with security certificate.</p> <p>In addition the lock is equipped with a dust protection flap.</p> <p>All fittings made of stainless steel V2A.</p>	1
<p>Access into the body easier with electrical step mounted under the stairway box.</p> <p>Switch beside the door inside the body.</p> <p>Connected to the electrical system of the body.</p> <p>Removable for series off-road activities with water-proof plug.</p>	
<p>ACTION MOBIL luggage compartment hatch. Length up to 1200 mm.</p> <p>ACTION MOBIL-Luggage compartment door.</p> <p>PVC double lip seal. Double GF section. 3-point locking by means of solid lever bolt. Top quality security cylinder lock with integrated dust protection in one key system with security certificate. In addition the lock is equipped with a dust protection flap. All fittings made of stainless steel V2A. Position:</p>	1

Hinged ACTION MOBIL-window with safety-glass. Size 900x500mm double-glazed window unit with no cold bridge, outer and inner frame made of fiberglass profile. 2 layers of safety glass 6mm each with 8 mm vacuum void. Hinges and locks made of stainless-steel, fixed with stainless steel bolts. Secure ventilation setting. 2 manual locks to open, close and lock the window. Flush mounted design.	4
Cut-out in rear wall of cab for passage to house. Remove and re-installing of driver's- and co-driver's seat. Cut-out of rear wall. Mounting of an GRP-profile frame into driver's cab for fixing the aluminium-frame of the bellow. Cut-out of interior coverings and paint-work for rear driver's cab wall.	1
Passage to driver's cab. Passage to driver's cabin means of a detachable, flexible and insulated connection. Recess in rear wall of cabin. Lockable, fully insulated flap made of glass fiber reinforced plastic (GF) sandwich (61 mm) in cabin. Dis- and assembly of rear cab covering and seats. Cut out of rear cab Paintwork for rear cab wall.	1
ACTION MOBIL roof exit hatch ACTION MOBIL roof exit flap made of glass fiber reinforced plastic sandwich, incl. Mosquito net. No cold bridge, highly insulated and accessible. Size: about 1 m².	1
Inclination of body side walls. Reduction of width of body in roof area of about 15 cm.	1
Body slope front surcharge for 45° slope of body front	1
ACTION MOBIL luggage compartment hatch. Length up to 1000 mm. ACTION MOBIL-Luggage compartment door. PVC double lip seal. Double GF section. 3-point locking by means of solid lever bolt. Top quality security cylinder lock with integrated dust protection in one key system with security certificate. In addition the lock is equipped with a dust protection flap.All fittings made of stainless steel V2A. Position:	1
Moskitonet/blind - upcharge special top-quality moskitonet/blind in a frame made of painted aluminium.	4
Roof-Vent 24V, performance max. 850m³/h, for aerate and de-aerate,infinately variable Speed,	1
Installation of roof vent. All wiring, mountings as required.	1
bathroom ventilator hatch low profile smoke grey acrylic roof hatch in aluminium frame with adjustable hatch stays and secure ventilator catches. Size: 250x250mm	1
fly screen for roof hatch made to measure with demountable fixings. 250x250mm	1
3-layer paintwork for fiberglass body 2 component filler, primary coating and acrylic laquer. Body size: 5300 x 2350 x 2088 mm (Selection of RAL colours upon customers choice.)	1

interior paintwork up to 5,3 metres cabin high quality wear resistant paint, standard light colours.	1
Sanitary room - PURE Sanitary room made of fibreglass reinforced sandwichpanels 30mm. Used in construction of bathroom, shower and toilet. Bathroom door made of sandwich panels 30mm with stainless-steel fixtures and fittings aisi 316. All the surfaces are finished are prepared for painting. Cabin made of fiberglass enforced polyester sandwich-compound panels. Foldable CORIAN bathroom lavabo made to measure. Double-locked in upright position. Includes shelf of Corian with stainless-steel rail. Connected to onboard water system. Single pillar mixer tap chrome. Wall mounted shower thermostatique tap chrome, flexible shower hose, shower head and mounting rail chrome. bathroom storage/vanity cabinet 2 doors both internally mirrored. 2 adjustable shelves per side with built-in fiddle rail. Carcass made of 2 side furniture-grade laminated plywood. Edges covered with bandings of real wood or plastics as required.(Selection of colours and surfaces to	1
Toilette Sealand toilet system with porcelan toilet bowl. Toilet bowl directly mounted on top of holding tank. Draining of tank with slide gate waste valve under cabin. Blackwater tank, capacity: 50 litres. Constructed to off-road standard, made of insulated sandwich-panel, with access for cleaning and maintenance. Level alarm built-in. Emptying valve 3" included. Valve is	1
Floor in shower of TEAK Surcharge for TEAK in the shower-area.	1
Seating area : 1200 mm Seating area based on a pedestal, convertible in a double bed. Left side for the fresh water tank, out of freez. Right side for : batteries, electrical component, storage and electrical panel. Center, in the pedestal for all the technical equipment, plumbing and eating stuff. Full acces from the top, by remove the floor. Table size 800mm x 1200mm fited on a main central feet. Feet, manualy adjustable to convert the table in bed.	1
Hanger cupboard, size : 1200 mm with 3 flap doors. With automatic stays, pneumatic bumpers and off road catches. Carcass made of 2 side furniture-grade laminated plywood. Edges covered with bandings of real wood or plastics as required.(Selection of colours and surfaces to customers choice.)	2
Sleeping area, size of mattress : 1400 x 2000 mm Made of 2 side furniture-grade laminated plywood with real wood bandings. Open storage at the feet, accesible from the top. Full storage space underneath, app.: 2,5m3, out of freez, accessible from outside. Made of 2 side laminated block plywood with real wood bandings.	1

large over-bed cupboard : 1400 mm Cupboard in 2 parts. Upper part composed of 3 box with lid. The central part wider than the side parts. The lower are open storage accessible from the front to store various objects.	1
Mattress 2.000x700mm Comfort-mattress with removable cover.	2
Wood mattress suspension 2.000x700mm Mattress suspension with manually liftable head rest and footrest.	2
Kitchen block OFF, size : 1100 x 600 mm Kitchen block in 2 parts : Right part for the fridge, left part with 4 drawers The countertop is prepared for the sink and the cooker. Made of 2 side laminated block plywood with real wood bandings. (Selection of colours and surfaces upon customers choice.)	1
Hanger cupboard, size : 1100 mm with 3 flap doors. With automatic stays, pneumatic bumpers and off road catches. Carcass made of 2 side furniture-grade laminated plywood. Edges covered with bandings of real wood or plastics as required.(Selection of colours and surfaces to customers choice.)	1
custom fitting of kitchen storage design and installation of tailor made off-road fittings to hold customers own cooking equipment, cutlery, china, glasses etc. typical 4 person place	1
Kitchen tap chrome. GROHE	1
Refridgerator with freezer compartment, 130 liters. compressor refrigerator with 130 liters refrigerator compartment and ***freezer compartment. Noise level: appr. 32 dB. Cold accumulator for noiselessness during night. Mounted in kitchen, connected to electrical system of body.	1
ACTION MOBIL fridge, instead of the standard fridge - Surcharge Made of 60mm sandwich panels. Insulated door and magnetic gasket included. Fully hermetic compressor with control electronics and integrated low-voltage protection. Automatic cut-in at normal voltage. O-vaporator, consumption: 60 watts. Temperature adjustment by means of an internal thermostat. Evaporator cell with extractable drip collection tray. Off-road proof mounting of both compressor and vaporator. Exhaust for warm air with brushless DC-fan.	1
Oven with integrated 3-burner hob. 0	1
Mounting of oven below level of work surface. Incl. Stainless-steel heatproof surround.	1
anti splash-wall, made of clear safety glass 8mm. mounted on top of the kitchen-countertop between sink and seating area. About 25 cm high.	1

<p>full gas installation</p> <p>with supply pipes as required. 3 control valves. Additional push-connector for exterior use. All materials and mounting off road proof. Fully inspected with gas certificate.</p>	1
<p>Tablet, foldable, size 600 x 500 mm</p> <p>Additional tablet, mounted on the cupboard next to the entrance, with lock up for transport and work position.</p> <p>Material, surface and colour as another cabinet body.</p>	1
<p>Cupboard 3 sections, size : 650 x 850 x 1950 mm</p> <p>Down part built with a independant door, ready to store shoes.</p> <p>Lower part with one door, prepared with ledges for 8 EUROBOX, size: 600 x 400 mm, huge space, app. 0,4m³.</p> <p>Upper part, with one door, height 1100 mm, to hang-up clothes.</p> <p>Made of 2 side laminated block plywood with real wood bandings.</p> <p>(Selection of colours and surfaces upon customers choice.)</p>	1
<p>purpose built fridge/kitchen storage unit.</p> <p>built to accomodate fridge with 2 drawers below fridge and one storage cupboard above.</p> <p>Carcass made of 2 side furniture-grade laminated plywood. All drawers with stainless steel runners, automatic closers and off-road catches. Edges covered with bandings of real wood or plastics as required.</p> <p>(Selection of colours and surfaces to customers choice.)</p>	1
<p>Lower cupboard with drawers, next to the entrance. Width 90 cm</p> <p>Cabinet with 4 drawers on roller sliders.</p> <p>All drawers lock up with heavy duty bolt lock.</p> <p>Cabinet body and blinds made of 2 side laminated block plywood with real wood bandings.</p> <p>(Selection of colours and surfaces upon customers choice.)</p>	1
<p>custom built control panel</p> <p>black anodized aluminium panel with layout graphics in 2 side furniture-grade laminated plywood frame.</p> <p>Automatic closing catch and Blum-hinges.</p>	1
<p>Book shelves</p> <p>2 open wall mounted book shelves with removable fiddle rails.</p> <p>Monted above a lower cupboard in the entrance area.</p> <p>Carcass made of 2 side furniture-grade laminated plywood.</p> <p>Edges covered with bandings of real wood or plastics as required.</p> <p>(Selection of colours and surfaces to customers choice.)</p>	1
<p>Floor covering synthetic special (per sqm)</p> <p>Bonded to walking area and floor of seat pedestal, proofed with silicon sealing compound.</p> <p>(Selection of colours and surfaces upon customers choice.)</p>	6
<p>Hooks stainless steel</p> <p>wall mounted to client requirements. Additional reinforcement when mounted on Sandwich wall</p>	8

Electrical installation 12/24 Volt DC Electrical installation for supply and control of all 24V DC circuits in the body. Standard control panel with switches for waterpump, heater, etc. Automatic circuit breakers for all 24V DC circuits. Digital panel for the general control of the electricity : consumption, charge state, voltage, ... Digital panel for the general control of the tanks: fresh water, grey water, black water, fuel. 2 AGM-batteries 12V 260 Ah (20 h discharge). Batterie main switch with overload interrupter. Battery charching by DC-DC converter 30 A, supplied by the chassis batteries. 24V DC plug in panel. Include, 3 plugs, 24VDC, in the body and one plug 24V-DC in the storage area at the back.	1
Charging from alternator System to optimize charging of house batteries from engine alternator. Charge is regulated via a diode to enable a complete full charge.	1
LED dome lamp, Aluminium casing with glass top and stainless steel ornamental ring. Diameter 120 mm, 11-30V 6W. Mounted on ceiling, wires installed inside covered cable tubes, connected to electrical system of body.	14
LED flex arm reading light Metal casing, pivoting and swivelling. Integrated rocker switch. wires installed inside covered cable tubes, connected to electrical system of	3
Light fixture for storage compartment, LED high power LED strip Automatic switch Wires installed inside body walls, connected to electrical system of body.	2
light switch for the ceiling lights inside the body. Functional separation for shower-, kitchen-, seating- and sleeping area. Mounted at a furniture- and/or Sandwich-wall. Wiring inside the walls.	4
Additional AGM batteries, 12V 220Ah (20h), Installation and connection of 2 additional AGM-batteries 12V 220 Ah. (20 h discharge) only in combination with the 24 VDC installation.	1
Battery plate protection system increases battery life by a factor of 3-5 by minimizing sulfating.	4
Solar panel 240W 24V Supply of the solar panel 240W -24V	4
Installation of solar panels to cabin roof. Weather angled Off-road mountings and electrical connection.	4
Solar charging regulator. 80A. Protection/regulation system to prevent overcharging of house batteries. Special MPPT technology for high-efficiency output.	1

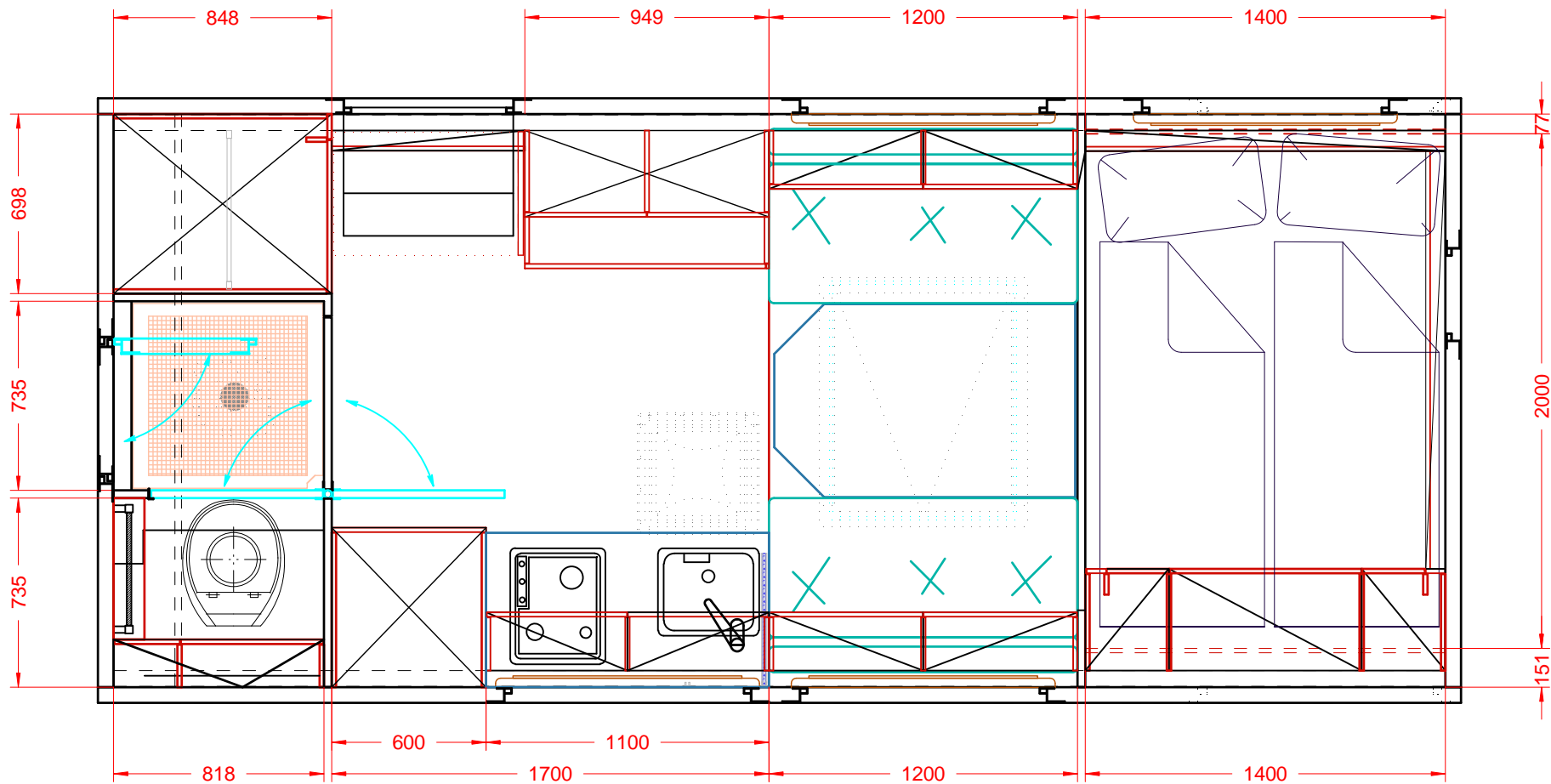
Electrical installation 230V AC	1
Electric installation for supply and control of all 230V AC circuits in the body.	
Outside sealed plug to connect shore-power.	
Breaker box with automatic circuit breakers and interrupters for all 230V AC circuits.	
3 AC plug sockets in the body.	
1 AC plug sockets in the storage area at the back	
CA-Documentation, available on CD-Rom, with wiring diagrams, part lists	
Battery charger 24V 25 A - 115/230V	1
I-U battery-charger, input 90 - 265 V AC, 45 - 65 Hz.	
Output 24V 25 A.	
Only in combination with the 230 VAC installation	
Inverter 24V DC - 230V AC 50Hz, 3000 W	1
Installation of a sinewave DC - AC inverter.	
Continuous output: 3000 watts , max. output: 6000 watts	
plug 230V	1
in driver´s cab. Connected to the 230V AC supply of the body	
reversing camera 6" color monitor.	1
CCD colour camera (PAL/NTSC) with LED	
Sturdy, waterproof aluminium housing with protective steel cap and adjustable anti-dazzle sunshield	
Waterproof microphone	
Electronic brightness adjustment	
Wide-angle lens with large picture angle (120° diagonal) Installation of reversing camera. Providing access and wiring runs to hinge point of cab and back to cabin, all wiring in UV-protected cable tubes. Involves a major demounting of cab-instrumentation and interior trim.	
Central light switch	1
Shuts off and on all lights in the body.	
Mounted in the entrance area.	
Work light Hella LED	3
Hella work light, monted on the roof rack, left and right side and one on rear wall of the body	
Remote control for the work light	1
Remote control usable from inside and outside of the body. In case of using the remote control the work light works from the body batteries.	
0	1
0	
Alarmsystem	1
central unit with narcotic gas sensor installed in sleeping room nearby head. Incl. Ultrasonic sensor for both body and driver´s cab. Incl. Door contact switches for ACTION MOBIL luggage compartment hatches.	
LPG-gas detector	1
connected to the alarmsystem. Installed in the floor area of the cabin.	
Includes wiring to the built-in alarmsystem and mechanical protection.	
Carbon monoxyd detector	1
connected to the alarmsystem. Installed in the sleeping area. Includes wiring to the built-in alarmsystem.	

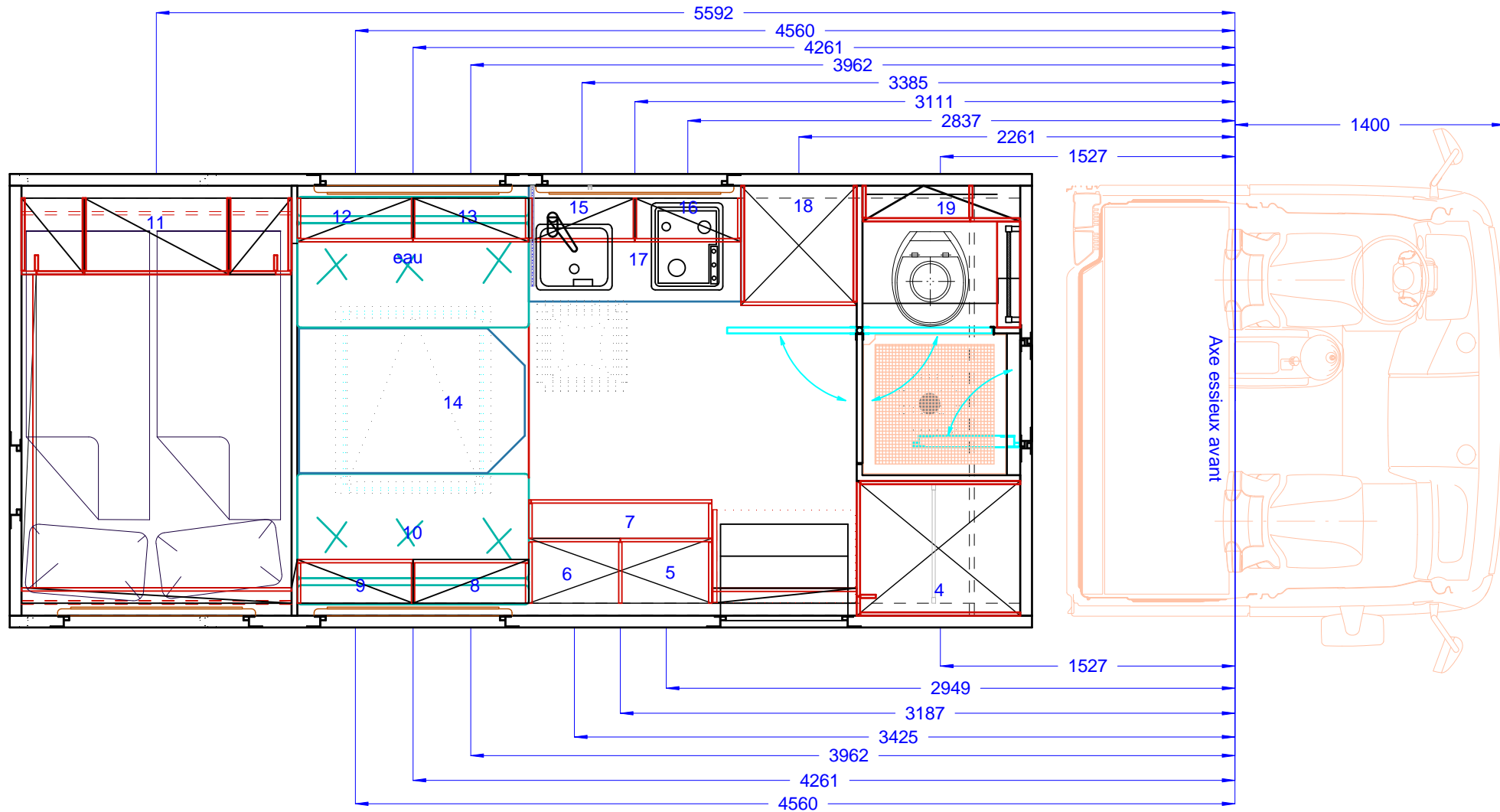
Freezer box Engel MT 35 , 12V-24V Deep freezer box with compressor. Incl .additional DC-fan to optimize ventilation. Capacity: 32 liters.	1
Bose WAVE Music System with SOUNDLINK Listen to music wirelessly from your iPhone/iPod, smartphone, computer, tablet or other Bluetooth® device. Lifelike sound from Bose® waveguide speaker technology Integrated DAB/FM/AM tuner with improved radio reception, seek and RDS functionality. High-performance CD player - plays music from CD/CD-R/CD-RW MP3-encoded CDs. Now with: Touch-top on/off/snooze controls; dual independent alarms	1
Freshwater tank Fresh water tank, capacity: 450 litres. Constructed to off-road standard, food quality material, with access for cleaning and maintenance. Filling by means of GARDENA-type hose attachments. Level indicator built-in.	1
main cabin water pump 12/24V DC. Fully integrated demand sensor control. Incl. Prefilter and connection parts. Delivers up to 14,5 litres/min	1
Greywater tank capacity: 140 litres. Constructed to off-road standard, made of insulated sandwich-panel, with access for cleaning and maintenance. Level indicator built-in. Emptying valve included.	1
plumbing of domestic water system installation of water system supply and waste pipe runs, all connections, valves, hoses, syphons to off road standard.	1
SEAGULL IV X-2B water purification system Independently certified to meet EPA Microbiological Purification Standards against cysts, bacteria & virus! Excels at chemical and aesthetic contaminant removal. No chemicals, hold time, electricity, double processing, large storage tanks or waste-water production. Performance: 8 liters/min. off road mounting brackets, full water connections and bypass system. Installed after the water pump.	1
exterior shower h/c mixer tap, locker mounted, exterior supply to flexible shower hose and shower head.	1
Vacuum blower for black water tank Installation of a vacuum blower in the vent line of the black water tank.	1
5 KW Webasto Diesel heater Diesel Heating system with WEBASTO 5kW. Webasto control unit installed in main cabin control panel Boiler cap. : 20 l, also with a electric element 750W/230V Radiators in the living room and in the sleeping room Radiator in the sleeping area consist of a pipe under the mattress. All the radiators are controlled by a thermostatic valve. All plumbing to full domestic standard in copper with high pressure connectors. Insulated as required.	1

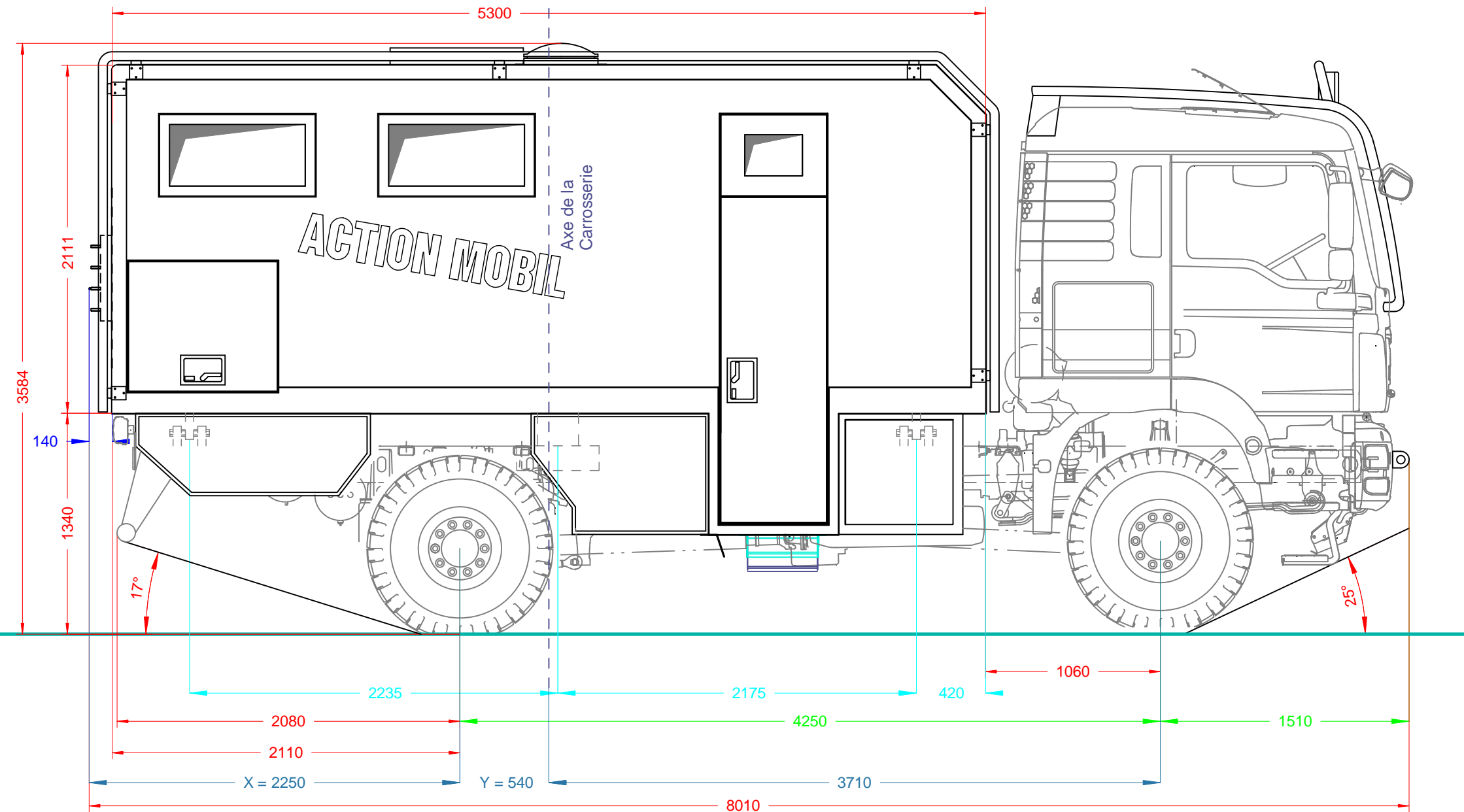
House ventilation - static air-inlet Static air-inlet, cover by a stainlesssteel hat. Diameter 80mm - 38,5 cm2. Provide a permanent ventilation into the house. Works in combination with Exhaust fan. Model Vetus - Scirocco.	1
House ventilation - Exhaust fan Permanent extraction of the vitiate air of the body by a solar-vent. Channel with 3 inlet to suck vitiate air from the bath-room, living-room and cupboard. Integrated batteries provide energy during night. Material from boat.	1
Bathroom radiator. can be operated independently from cabin heating system with seperate thermostatic control.	1
Additional Fuelpump Heater Fuelpump to use in altitudes higher than 2.500 m .	1
heat exchanger + engine preheat Connection of heating system with the engine cooling system through a heat exchanger. While engine is turned on, the body heating system will automatically be supplied by waste heat of the engine cooling system. Enable cold engine to be preheated from the body heating system Switch instaled on the main electric panel Output: 5 kW	1
Floor heating system Integration to the existing water-heating system. Installation of non-diffusion, aluminium-covered plastic-pipes, clipped into "Omega-styled" metal plates. Covering os the system with 2mm metal plates and prepared	1
anti freeze protection for greywater tank Installation of copper tubes into the tank. Connected to the domestic heating system.	1
Airconditioner Saphir Vario Compact airconditioner, installed under the bench or under the bed. Air outlets in the corner of the seating area or the bed under the ceiling. Connected to electrical system of body. Remote control for operation of airconditioner. Consumption: 230 V AC, 4,4 A, cooling performance: 2.000 watts	1
Splash guards behind rear axle Black rubber splash guards, mounted behind rear axle according to law requirements.	2
Fire defense set, consisting of: 1 x CO2 fire extinguisher, 2kg, 1 x powder extinguisher 6kg, 1 x fire blanket 100x100cm. Mounted in the body or in driver´s cab	1
exterior aluminium locker each locker custom designed to accomodate truck layout requirements, exit angles etc. Secure locking system, dust proof locks, keyed to pass.	3
exterior aluminium locker for heater custom designed to accomodate truck layout requirements, exit angles etc. with insulation and condensate drainage. Secure locking system, dust proof locks, keyed to pass.	1

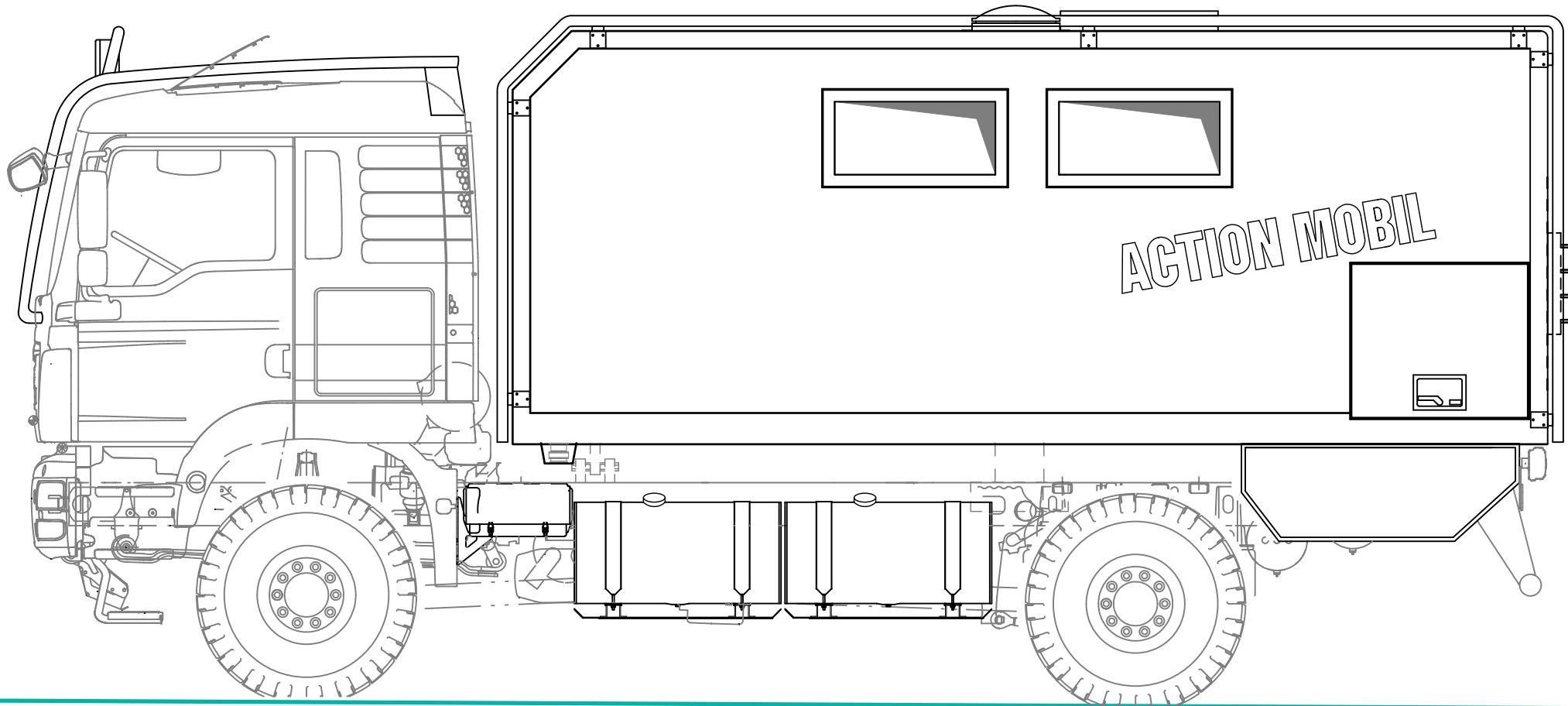
<p>paintwork to aluminium lockers</p> <p>2 part filler, primary coating and acrylic lacquer. (Selection of RAL colours to customers choice.)</p>	4
<p>sand ladders</p> <p>length: 2 metres, width 40 cm, gauge 4mm, perforated aluminium</p>	4
<p>off road fixing</p> <p>for sand ladders. Specially designed to accommodate bent ladders (after use). With built-in padlock security.</p>	1
<p>Preparation of the rear wall for installation of a motorbike rack</p> <p>Installation of a technical structure inside the rear part of the body, to reinforce it for the installation of a motorbike rack.</p> <p>Prevent stress in the body while off-road use.</p> <p>For body without rear slope.</p>	1
<p>off road mounting bracket for spare wheel (with tyre)</p> <p>made of stainless steel. Lifting bracket and chain block system for lowering/raising wheel. One man operation possible.</p>	2
<p>Branch guard for roof hatch and solar panels</p> <p>Triangle designed bar, made of stainless steel to protect roof hatches and solar-panel</p>	1
<p>protection rails</p> <p>for the reversing camera.</p>	1
<p>branch guard for driver's cab</p> <p>branch guard for driver's cab. Suit to design of driver's cab. Made of stainless steel pipes, diameter 54mm. Surface brushed.</p>	1
<p>protection rails 5300mm</p> <p>for cabin. Tailor made as required, 54mm stainless steel, brushed finish.</p>	1
<p>Lash down rail, mounted in the outside storage, price p. m.</p> <p>Aluminium aircraft cargo track for airline single stud fittings. Vertical load capacity: 100 kg Mounted in the rear storage compartment.</p>	4
<p>Airline-Single Stud Fitting</p> <p>to clip into the Airline-Lashing rail.</p>	20
<p>Lash down rail, mounted at the right wall of the body. Prepared to fix a camouflage tent or similar.</p> <p>0</p>	1
<p>GARMIN antenna</p> <p>installation and mounting of high sensitivity GPS-antenna. Roof mounting cabling as required. Dashboard mounting bar with adjustable clamps.</p>	1
<p>in connection with "WORK light Hella LED"</p> <p>automatic switch for rear work light, connection to reverse gear</p>	1
<p>Lashes for additional beams</p> <p>4 lashes as preparation to mount additional beams. Made of stainless steel.</p>	1
<p>branch guard for additional beams</p> <p>Suit to design of driver's cab to protect the beams.. Made of stainless steel pipes, diameter 54mm. Surface brushed.</p>	1

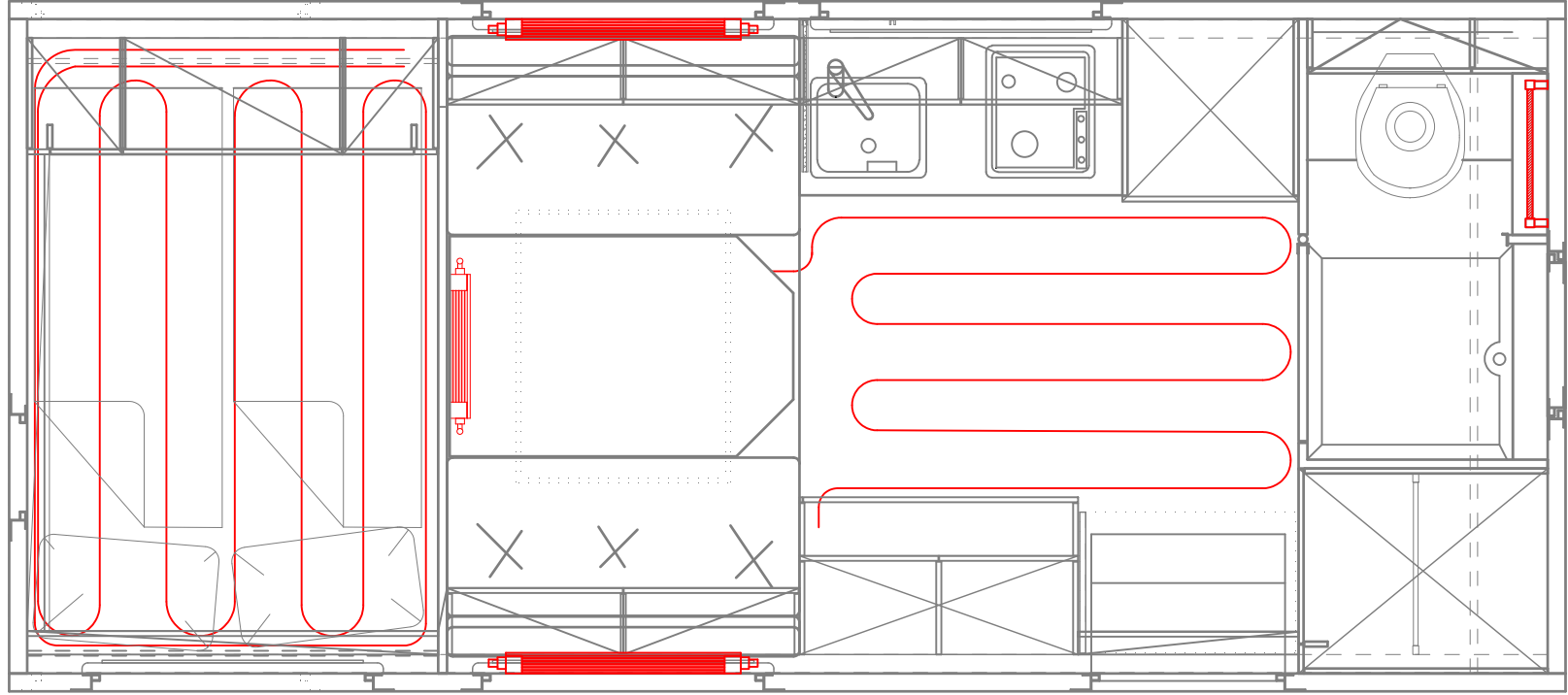
Relocation of the muffler and the exhaust. MAN TGM 13/18.xxx	1
Constructing of customized holding support of painted steel and construction of stainless-steel belts to install the muffler in parallel direction to the steel profiles of the chassis.	
Modification of exhaust pipe and integration of emission control sensor.	
ACTION MOBIL fixed (non opening) window 450x450mm	1
twin panel, vacuum sealed unit, solar reflective glass with green anti-glare finish. 2 layers of safety glass 6mm each with 8 mm vacuum void, built in blind with solar reflective lining.	
ACTION MOBIL fixed (non opening) window 450x450mm	1
twin panel, vacuum sealed unit, solar reflective glass with green anti-glare finish. 2 layers of safety glass 6mm each with 8 mm vacuum void, built in blind with solar reflective lining.	
Levelling system left/rear for chassis with airsuspension manually controlled means by 2 ball valves.	1
ALCANTARA for seating area 1.200mm	1
surcharge for ALCANTARA of customers choice instead of standard fabrics.	
	1
Installation for WIFI antenna	1
installed in a protected area between driver's cab and body. Antenna can be lifted up	
additional safety-locks for MAN driver's cab (2 doors)	1
Safety locks with striker plates, installed in driver's and co-driver's door. Top quality security cylinder lock with integrated dust protection in one key system with security certificate. In addition the lock is equipped with a dust	

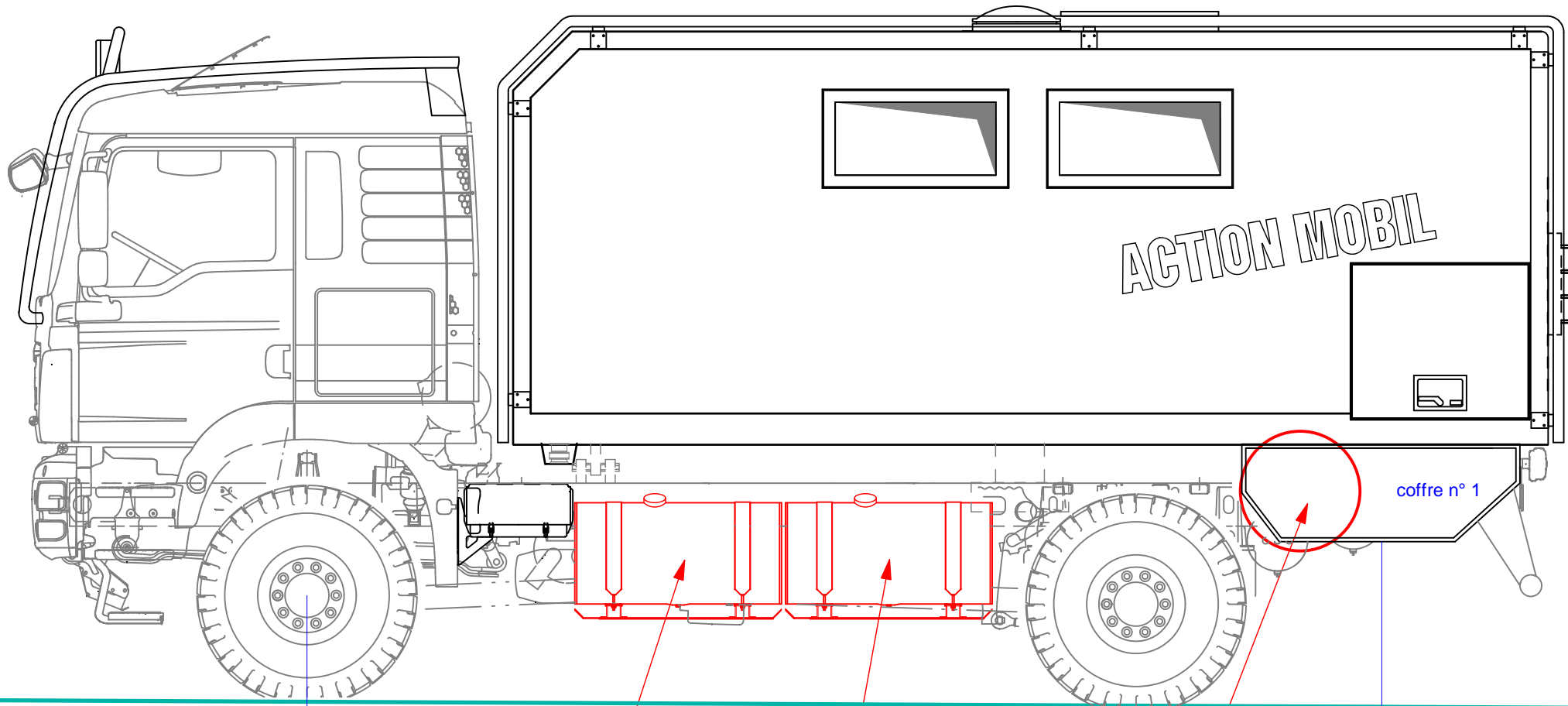












Reservoir 1

Reservoir 2

chauffage (chaudière)

5510

